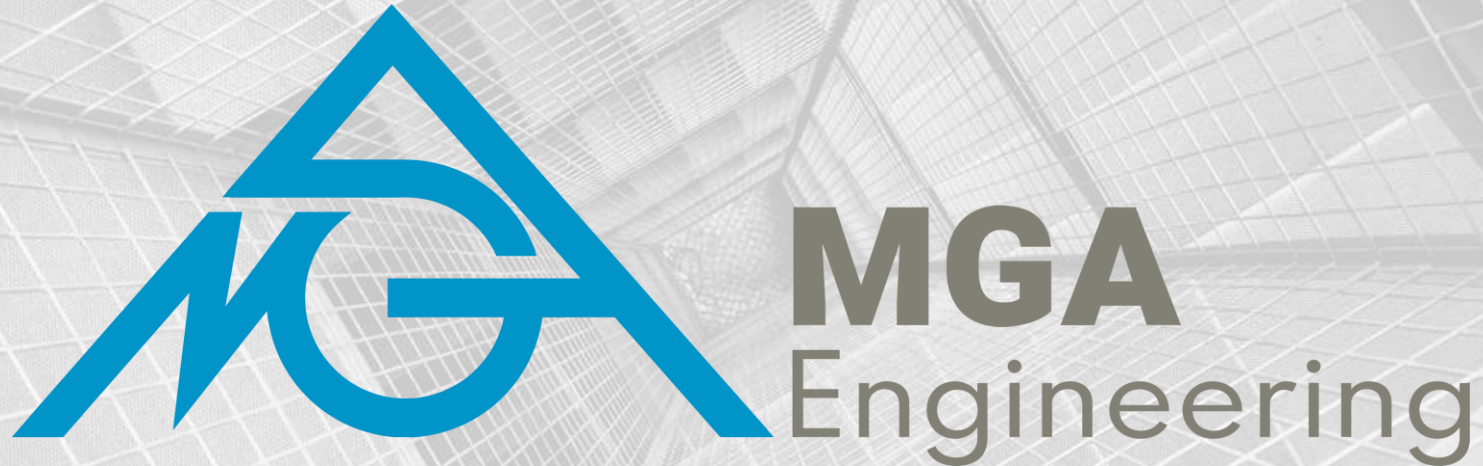


# CONVEYORS & MATERIALS HANDLING PORTFOLIO



**MGA Engineering Inc.**

Suite 3000 - 817 15th Avenue SW  
Calgary, Alberta, Canada T2R 0H8  
<https://www.mgaeng.com/>

**Contact:**

Steven J. Keays, M.A.Sc., P.Eng.  
Vice President  
[steven.keays@mga-ind.com](mailto:steven.keays@mga-ind.com)  
Cell: 1-587-433-1504  
Direct: 1-587-383-6690

# ABOUT MGA

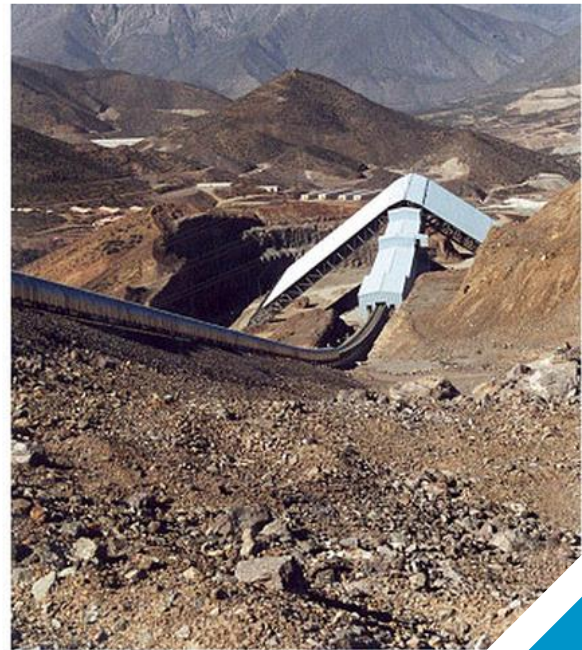
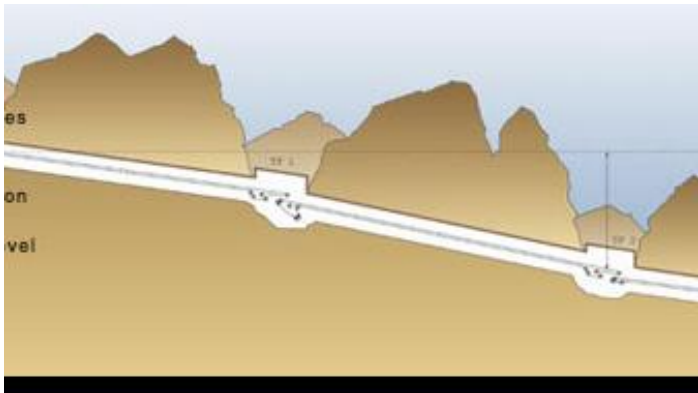
MGA Engineering Inc. is a master designer of structural and mechanical systems utilized across the globe in the marine, mining, infrastructure, and building sectors. Founded in 1996, the firm is headquartered in Calgary, Canada, and operates regional offices in Canada, USA, and Egypt. Throughout the decades, MGA has lent its expertise to owners, operators and fabricators of large-scale bulk materials handling equipment such as conveyors, ship loaders, stackers/reclaimers, crushers, storage tanks, vessels and transfer stations.

Over the decades, MGA has worked with all major Original Equipment Manufacturers (OEM), including Takraf, ThyssenKrupp, PHB, FAM, MWS, FLSmidth, Shinhan, and Sandvik.



# LOS PELAMBRES CHILE

- ▶ System Length: 12,700 m
- ▶ Longest Conveyor: 5,630 m
- ▶ Drop of System: 1,300 m
- ▶ Design Capacity: 8,700 mtph
- ▶ Belt Speed: 6.0 m/s
- ▶ Conveyor Width: 72"





- ▶ Conveyor Length: 2,400 m
- ▶ Lift of System: 250 m
- ▶ Design Capacity: 2,000 mtph
- ▶ Belt Speed: 3.9 m/s
- ▶ Conveyor Width: 54"
- ▶ Belt Rating: ST 4,000
- ▶ Installed Motor Power: 2 x 1250 kW
- ▶ Material: Gold crushed ore



## PIERINA OVERLAND CONVEYOR, PERU

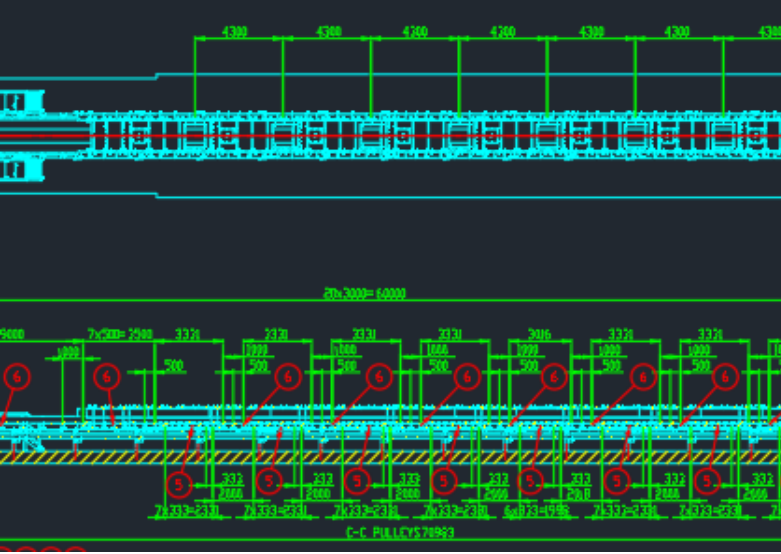






- ▶ Technical support for the overland conveyor
- ▶ Tripper design trouble shooting
- ▶ Drive design audits

# OYU TOLGOI MINE MONGOLIA SANDVIK



- ▶ Engineers of Record for the Structural and Mechanical systems
- ▶ 4,000 mtpd
- ▶ 1829mm belt



## PACIFIC COAST TERMINALS/KS POTASH CONVEYING SYSTEM-SANDVIK





# SEPT-ILES HARBOUR CONVEYORS POINT NOIRE QUAI NO. 35

- ▶ Materials: Iron ore
- ▶ Capacity: 8,000 tph
- ▶ Speed: 3m/s
- ▶ Length: 371 and 223m

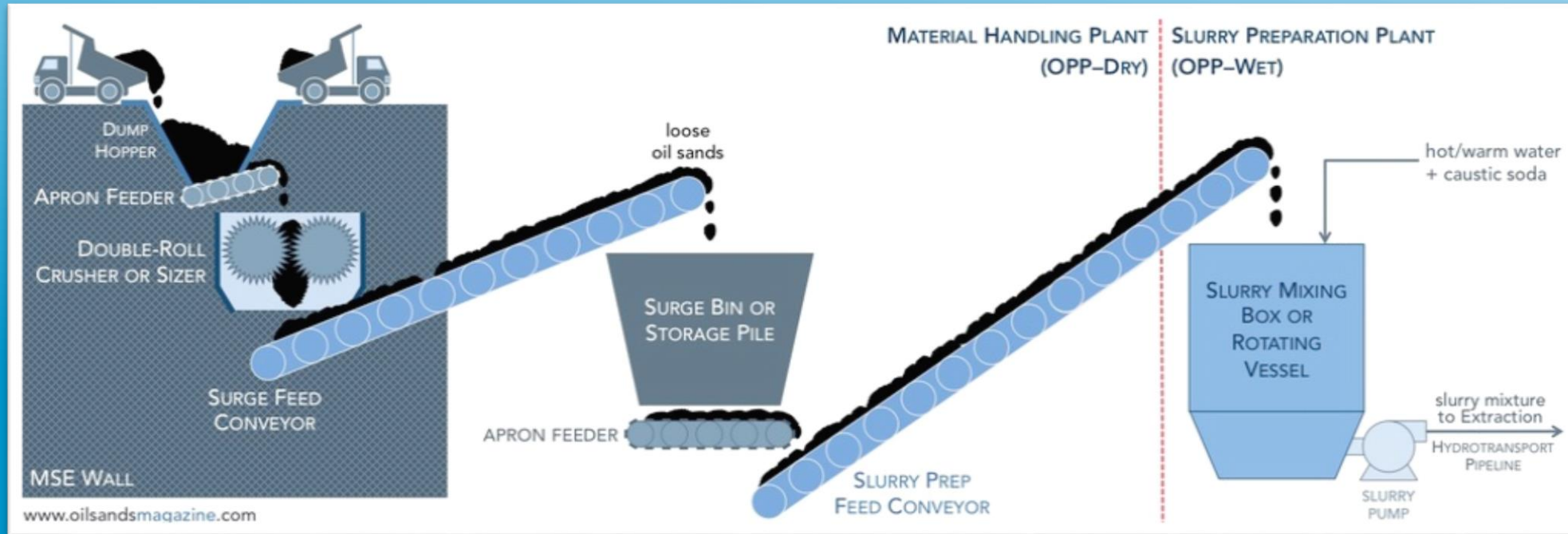




# MINING IN SOUTH AMERICA BULK MATERIAL HANDLING

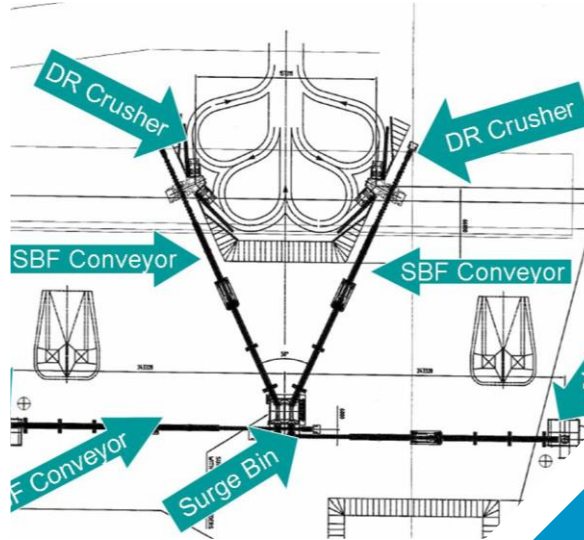
# MATERIALS HANDLING OILSANDS



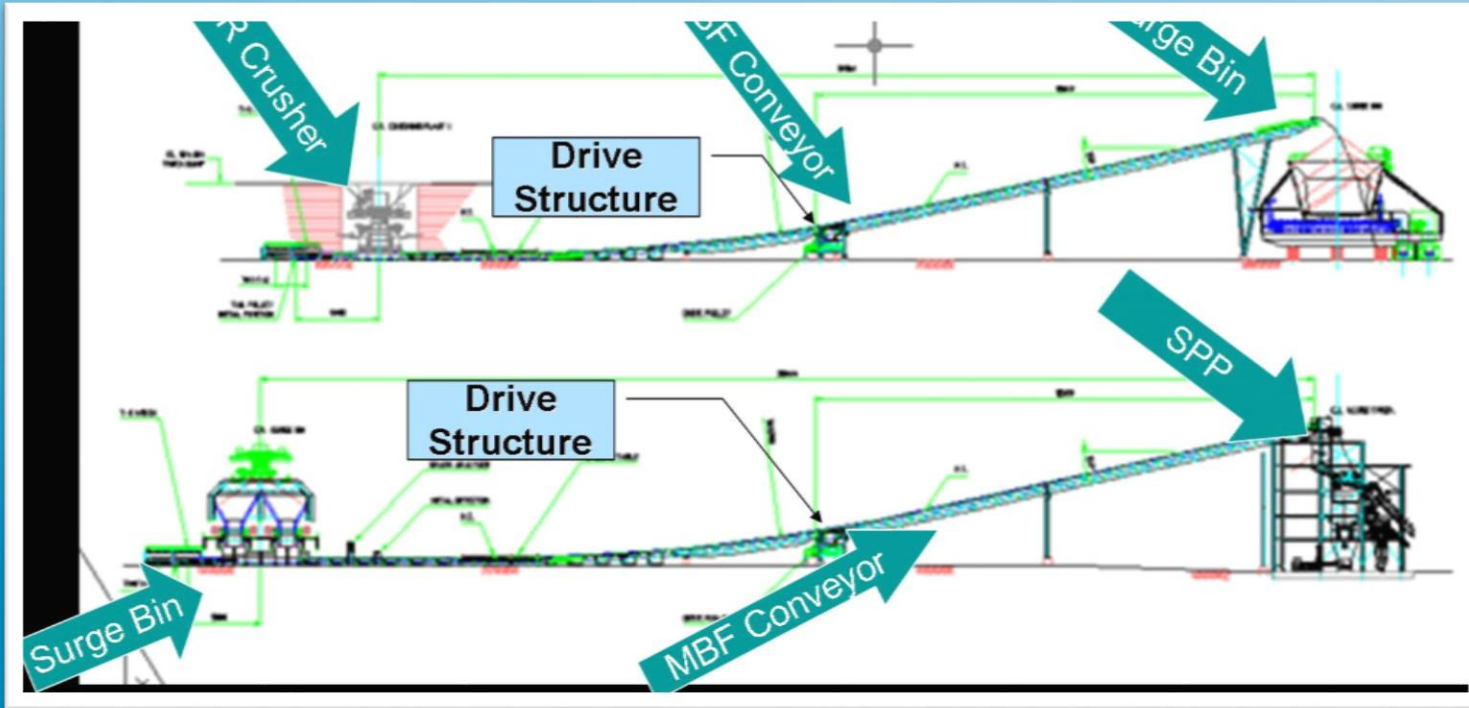


# INSTALLATION LAYOUT

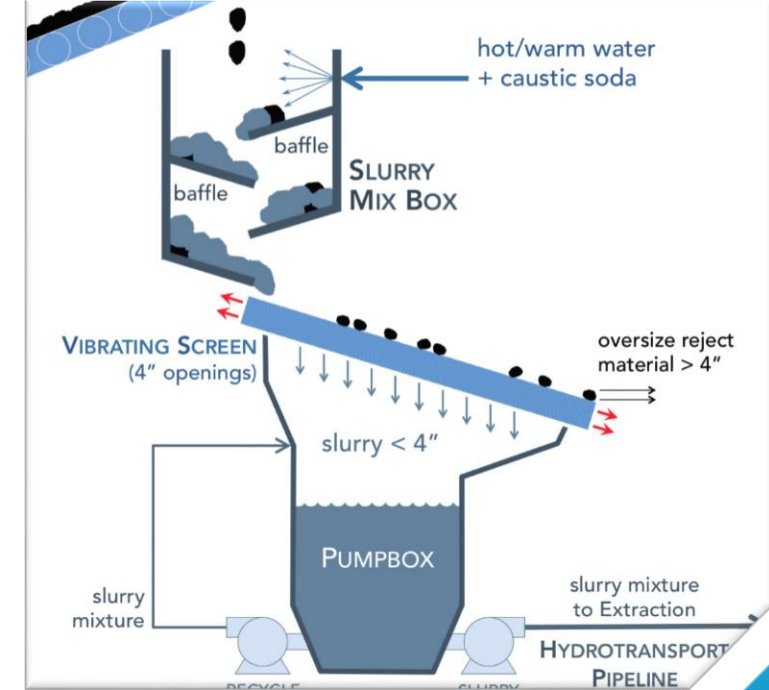
# SURGE FACILITY CNRL HORIZON







# MATERIAL MOVEMENT CNRL HORIZON



# SLURRY PUMP BOXES

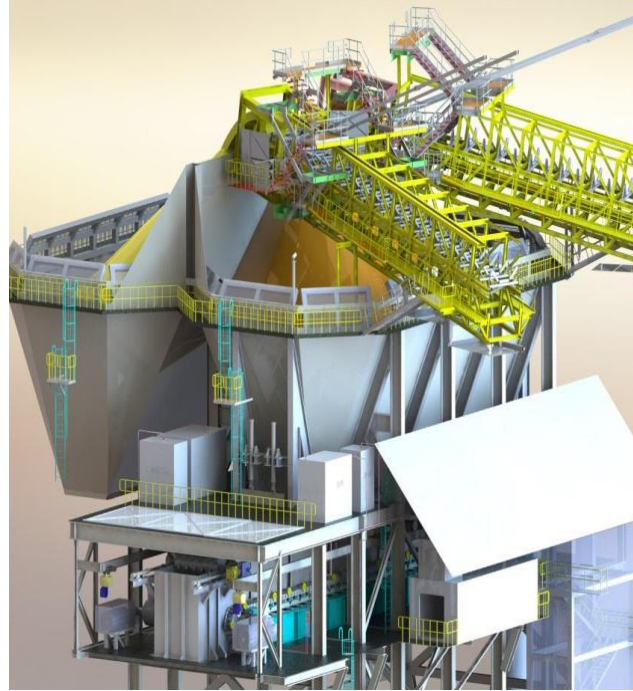


# PRIMARY SEPARATION CELLS



# SURFACE FACILITIES

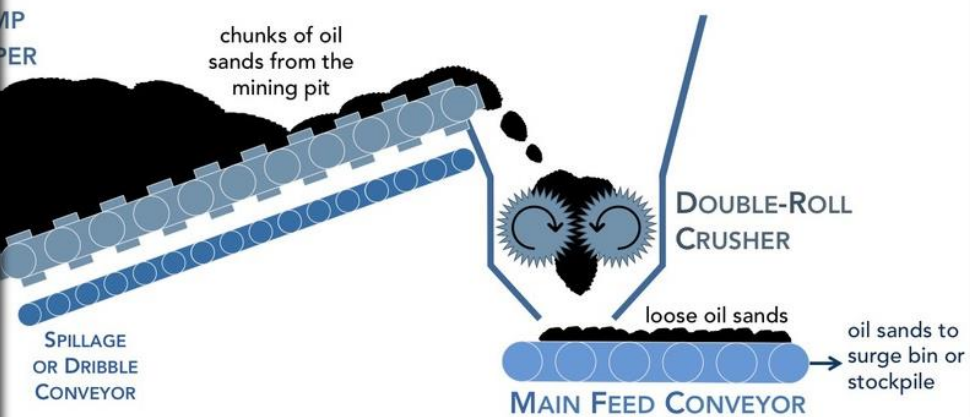




# SURGE BINS

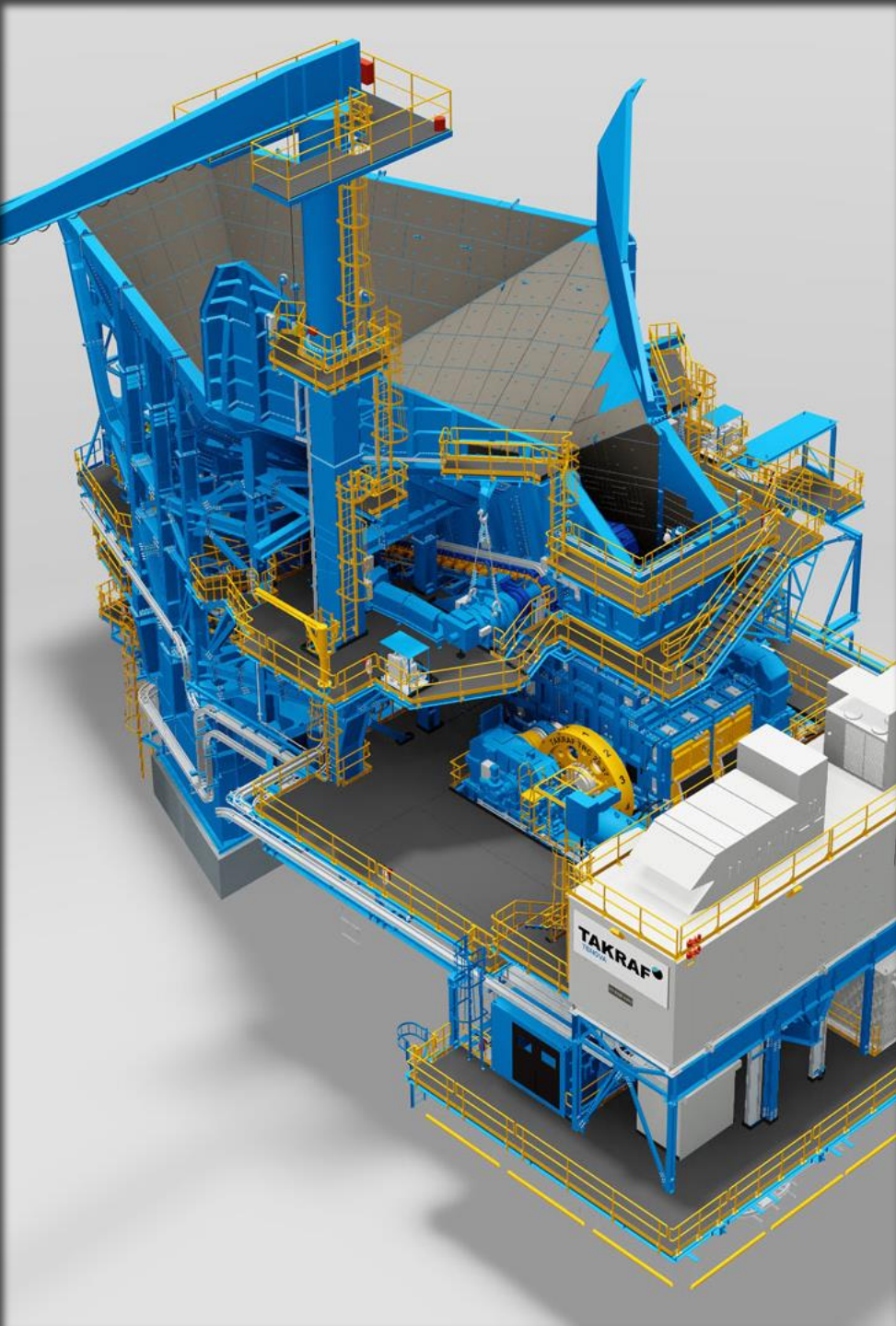


www.oilsandsmagazine.com



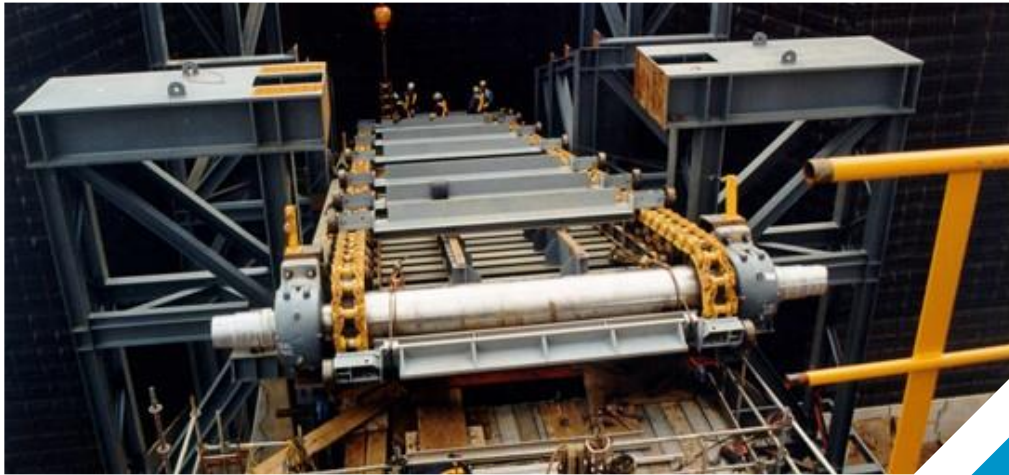
# CRUSHING PLANTS





# HOPPERS



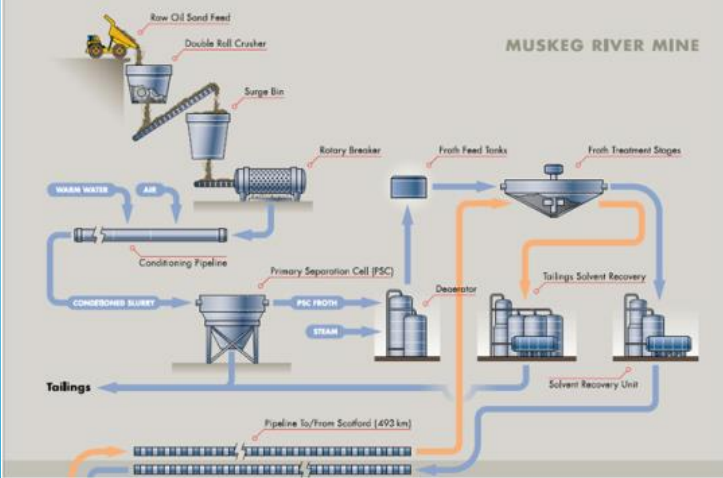


# HOPPER INSTALLATION



# MATURE FINE TAILINGS CENTRIFUGING PLANT





# SPECIAL SYSTEMS



**Calgary [Head Office]**

Suite 2800, 817 – 15<sup>th</sup> Avenue SW  
Calgary, AB T2R 0H8  
Canada

**Quebec City**

2828 Boulevard Laurier,  
Suite 734, Tour 1 Norton-Rose  
Québec City, QC G1V 0B9  
Canada

**Florida**

MGA USA ENGINEERS LLC  
7901 4th St N, STE 300  
St. Petersburg, Florida 33702  
USA

**Cairo**

MGA Technology  
30 Samir Mokhtar St., 9th & 10th Floor Ard El Golf  
Heliopolis, Cairo, Egypt



# Contact

Steven J. Keays, M.A.Sc., P.Eng.

Vice President

[Steven.keays@mga-ind.com](mailto:Steven.keays@mga-ind.com)

D: +1 587-393-6690

C: +1 587-433-1504